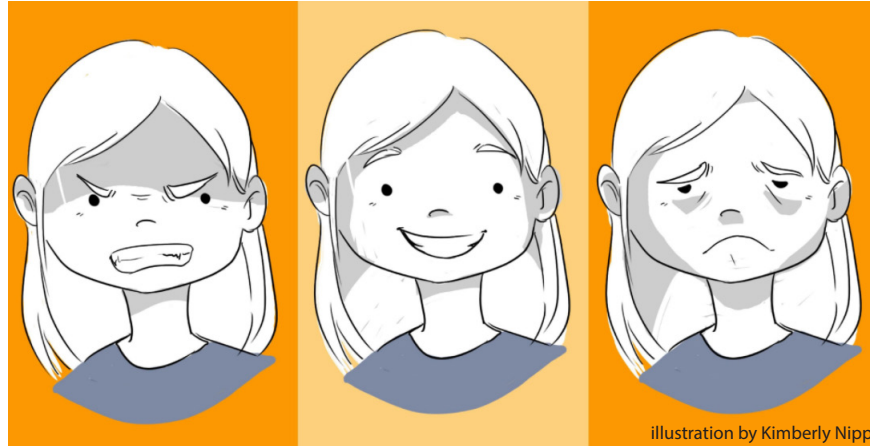


# PSYCHOLOGY 102-99C: Introduction to Developmental, Social, Personality, and Clinical Psychology



## ABOUT PSYCHOLOGY 102

This psychology course will introduce you to some of the major research areas within the field of psychology: the scientific study of behaviour. The course covers several fundamental topics in psychology (for example, social behaviour, intelligence, motivation, emotion, development, and personality). The course concludes with the topic of psychological disorders and their treatment.

This section of PSYC102 is a 3-credit online distance education course. The course uses an open-source text that is supplemented by many video-based lectures and online resources. In addition, the course contains interviews with some leading research psychologists and some educational animations.

There are no prerequisites or corequisites for this course. Note that you cannot receive credit for both PSYC102 and PSYC100.

**Instructor:** Steven Barnes

[sjb@psych.ubc.ca](mailto:sjb@psych.ubc.ca)

*In-Person Office Hours:* by appointment

*Online Office Hours:* by appointment

Please contact Steven for any academic concessions or accommodations. All other questions should be directed to Stella (see below).

**Teaching** Stella Baehring

**Assistant:** [psyc102de@psych.ubc.ca](mailto:psyc102de@psych.ubc.ca)

*In-Person Office Hours:* by appointment

*Online Office Hours:* by appointment

Please contact Stella for all other course-related questions.

**Websites:** [canvas.ubc.ca](https://canvas.ubc.ca)

We will be using Canvas for this course.

Please note that not all of the content in the course will be visible to you the first time you log into this course via Canvas. **In general, course content is released one week at a time.** The only exception is the readings: You will have access to all the text readings from the beginning of the course.

### Important Notes:

1. We encourage you to use the Canvas discussion forums for your questions, as that allows other students to benefit from your questions and your TA's and peer's responses.
2. In most cases, email messages will be answered within 48 hours on weekdays (not on weekends) during normal working hours.
3. When you send us an email, the subject line should include the nature of the inquiry (e.g., "Question about the limbic system"); the body of your message should include your full name and student number.
4. If you do send us an email that is content related, it should contain no more than one question and you should try to explain your current understanding of the content in the email (which will be affirmed or corrected by Stella).
5. Canvas captures data about your activity and provides information that can be used to improve the quality of teaching and learning. In this course, we plan to use analytics data to: (1) view overall class progress; (2) review statistics on course content being accessed to support improvements in the course; and (3) determine whether or not you participated in online activities (e.g., online office hours--see below).

## ACKNOWLEDGEMENT

UBC's Point Grey Campus is located on the traditional, ancestral, and unceded territory of the Musqueam people. The land it is situated on has always been a place of learning for the Musqueam people, who for millennia have passed on their culture, history, and traditions from one generation to the next on this site.

## LEARNING OUTCOMES

By the end of this course you should be able to

1. Explain what psychology is and isn't.
2. Describe the history and evolution of the field of psychology.
3. Describe the different types of psychologists and explain the sorts of work that each type of psychologist is engaged in.
4. Understand the nature of scientific inquiry.
5. Define modern psychology and identify the major perspectives within it.
6. Recognize, recall, connect, and evaluate psychological concepts and theories from specific subfields (e.g., developmental and social psychology).
7. Trace the history of the IQ test in particular, and of psychological testing in general.
8. Describe some of the classic and contemporary lines of thought in the following subfields of psychology: Developmental Psychology, Social Psychology, Personality Psychology, and Clinical Psychology.
9. Describe several areas of research related to motivated behaviours (e.g., hunger and eating, sexual behaviour).
10. Understand the concept of stigma, as it relates to psychological disorders.
11. Understand the history of the Diagnostic and Statistical Manual (DSM) of the American Psychiatric Association, and be able to provide an informed critique of the DSM-5.
12. Understand and explain basic research methods currently employed by psychologists.
13. Explain the concept of an 'experiment'; its strengths and its weaknesses.
14. Use effective evidence-based study strategies based on current psychological research.
15. Use and interpret basic descriptive statistics.
16. Understand the purposes of inferential statistics, and be able to interpret some basic inferential statistics.
17. Identify and avoid plagiarism when writing a psychology assignment.

## EVALUATION

Your grade in this course is based on your performance on the six sorts of assessments listed below. Please note that any grading disputes (other than calculation errors) must be handled within 2 weeks of grade release for a particular assessment.

### 1. Exams (77%):

There will be two midterm exams and a final exam: All exams will be administered online via Proctorio on Canvas (see below).

#### Midterm 1 (21%)

**Feb 25-26** (online; 24-hour window beginning at 10 am Pacific time on Feb 25)

#### Midterm 2 (21%)

**Mar 24-25** (online; 24-hour window beginning at 10 am Pacific time on Mar 24)

#### Final Exam (35%)

**Apr 14-29** (online; 24-hour window on a date to be announced in Feb)

### Notes on the Exams:

- The midterm exams are not cumulative. The final exam is half non-cumulative and half cumulative.
- All exams will be composed of multiple-choice and short-answer questions.
- Note that the instruction on all multiple-choice questions will be to "select the single best response."
- There will be no makeup exams (except under certain circumstances when the final exam is missed--see below).
- You will not receive a concession for missing a midterm exam unless you contact me within 48 hours of missing the exam. Receiving a concession for missing a midterm exam is at my sole discretion.
- If you receive a concession for missing one of Midterms 1 or 2, that portion of your course grade will be evenly split amongst the remaining exams in the course. If you receive a concession for missing both Midterm exams, you will be assigned a research project to make up for that portion of the grade corresponding to those missed exams.
- If you miss the final exam, you must contact your Faculty Academic Advising Office to address the issue. Please refer to the UBC Calendar for details of 'academic concession.' Please note that a makeup for the final exam will differ from the versions used for the rest of the class and will only be administered to you during the makeup exam date assigned to you by the university (typically in July or August).
- You will have a **window of 24-hours** within which to write each exam, beginning at 10 am pacific time on the first day of the exam window (see dates above). Once the 24-hour window is up, the exam will close and you will no longer be able to write the exam. Accordingly, it is critical that you start the exam no later than the duration assigned for the exam.
- Each midterm and the final exam will be timed. **Once you begin an exam, you will only have a set amount of time (e.g., 2.5 hrs) to complete it--regardless of when you started the exam within the 24-hr time window (see**

above).

- **All exams will be administered with the aid of a virtual proctoring system: Proctorio (see below).** You will have the chance to test your computer system with a mock quiz early in the course in order to determine if your system will support the use of Proctorio during the midterms and final exam. That mock quiz will be available as a test at any time during the course, but it is highly recommended that you test your system before the add/drop deadline of Jan 17.
- It is your responsibility to ensure that you have an adequate internet connection and the proper setup for Proctorio at the time you write the exams. Because of the possibility of technical issues, **you are strongly advised to start your exam as soon as possible during the exam time window.** If you have technical issues that are not reported until after the exam has completed, you will receive no concession.
- The date of the final exam is not announced until mid-February. You should not make any travel plans until you know the date of the final exam.
- There will be topics covered in the lectures that are not in the text and topics in the text that are not covered in the lectures. You will be responsible for both. That is, all readings and all lecture materials are examinable.
- Once exams have been marked, grades will be posted on Canvas. You will receive an email notification when grades are posted (please ensure the University has your correct email address).
- Please note that if you have an accommodation through the Centre for Accessibility (see below) for extra time on quizzes and exams, you will need to inform me before you attempt the first quiz so that we can add additional time for you for all the course quizzes.
- After your exam has been graded, you can view your exam with Stella, either in-person or through a private online meeting via Bb Collaborate (see below for more details about BbCollaborate).

### Virtual Proctoring of Exams with Proctorio

All exams will be administered online using a virtual proctoring tool called 'Proctorio' that is built into Canvas.

#### Things to know:

Proctorio is a remote proctoring service that will be used to invigilate assessments in this course. Proctorio will record your webcam, your computer screen, or other actions during the assessment session and share that information with me.

#### How does it work?

Proctorio requires the use of the Google Chrome web browser and you need to use/install the Proctorio extension (see "How do I prepare?" below). Proctorio is active when you log in to the exam and is gone when you log out. During the assessment, Proctorio captures your movements and sends your video and

other data (including keystrokes) to your instructor and select UBC staff for review. Proctorio will flag activity that may be deemed as suspicious which will be reviewed. I will be notified of potentially suspicious activity and will decide if any action is necessary.

#### Privacy

Visit Proctorio's Frequently Asked Questions page to learn about how Proctorio addresses privacy and security of data at [proctorio.com/faqs](https://proctorio.com/faqs).

All recordings made by Proctorio are stored securely on Canadian servers. In line with British Columbia's Freedom of Information and Protection of Privacy Act, these recordings are kept for a year and a day. After this time, the recordings are deleted.

#### How Do I Prepare?

- You need to use a Windows/Mac computer or laptop. You cannot take the exams from mobile devices (e.g., iPhone, iPad, Android device, etc.). You need a working webcam and microphone.
- You must use the Google Chrome web browser & the Proctorio Extension.
- If you do not have Google Chrome installed, please watch the video tutorial for installing Google Chrome: [youtu.be/vl-0azSPRlt0](https://youtu.be/vl-0azSPRlt0)
- Install the Proctorio extension for Google Chrome. It takes less than 30 seconds. The exams that require Proctorio will usually prompt you to install the extension if you need it. Click the link to install: [get.proctorio.io](https://get.proctorio.io)
- Have a photo ID card available. You will be asked to hold up your UBC picture ID or an official government photo ID to authenticate that you are the test taker. Ensure that the photo is clear and the ID text is legible for proof of your identity.

Using Proctorio is fairly simple. Proctorio walks you through the process as you're taking the exam, so you do not need to refer to any instructions while you're using Proctorio. The best way to prepare is to practice! There will be a practice quiz set up for you to get familiarized with using Proctorio.

#### Exam Support

During an exam, the LT Hub team will be providing exam support between 8:30 am and 4:30 pm Monday to Friday. Call 604-827-4775 or submit a ticket at [ctlt-bl-resources.ctlt.ubc.ca/contact-form/](https://ctlt-bl-resources.ctlt.ubc.ca/contact-form/)

If it is outside those hours, please contact Proctorio Support by clicking on the Proctorio shield icon found at the top right hand corner.

#### 2. Readings-Review Questions (2%):

During each week of this course, there will be review questions associated with the assigned readings. All readings-review questions will use the multiple-choice format.

Please note that there will be no extensions on the readings

reviews. If you cannot complete one of these readings reviews, and you have a valid excuse, the weight of the missed readings review will be spread amongst the other readings reviews.

Please note that the readings-review questions from the first three weeks of the course will have a due date of **Sunday, Jan 26 at 11:59 pm (Pacific time)**--this date is after the add/drop deadline (i.e., Jan 17) so that anyone joining the course late is not penalized for missing earlier materials. After the first three weeks, deadlines will be weekly. **In general, after the first three weeks, all readings-review questions will be due by 11:59 pm (Pacific time) on the Sunday following the week they are assigned.**

### 3. Quizzes (6%):

During each week of this course, there will be a quiz. All of the quizzes will use the multiple-choice format. Quizzes will be timed; once you begin the quiz, you will have 20-min to complete it.

Please note that if you have an accommodation through the Centre for Accessibility (see below) for extra time for quizzes and exams, you will need to inform me before you attempt the first quiz so that I can add additional time for you for all the course quizzes.

Please also note that there will be no extensions on the quizzes. If you cannot complete one of these quizzes, and you have a valid excuse, the weight of the missed quiz will be spread amongst the other quizzes.

Please note that the quizzes from the first three weeks of the course will have a due date of **Sunday, Jan 26 at 11:59 pm (Pacific time)**--this date is after the add/drop deadline (i.e., Jan 17) so that anyone joining the course late is not penalized for missing earlier materials. After the first three weeks, deadlines will be weekly. **In general, after the first three weeks, all quizzes will be due by 11:59 pm (Pacific time) on the Sunday following the week they are assigned.**

### 4. Short Essay (12%):

You will have to write a short essay (worth 11% of your grade in the course) of not more than 1000 words from one of two pre-defined topics. Each short-essay must be your own work, but you are required to attend at least one student-led group-discussion meeting to discuss your chosen essay topic no later than one week prior to the due date for the essay (see below).

**Short Essay (11%)**

**Mar 30**

**Attending at least one student-led group-discussion related to your chosen topic (1%)**

Each short-essay question will be graded using a rubric that will be made available on Canvas shortly after the beginning of the course.

Student-led group discussions will use **Canvas Bb Collaborate** (see course menu in Canvas) and you must be in attendance for at least 45 minutes of the group discussion you choose to attend (each group discussion will last for 60 minutes) in order to get the remaining part of your grade (i.e., 1%).

**TurnItIn.** Please note that you must submit your critique using a two-step submission procedure:

1. Submit a copy of your final draft by 11:59 pm on Mar 30 to both Turnitin.com and to Canvas. 10% per day will be deducted for late submissions.

• To submit your paper on TurnItIn you will need to go to [turnitin.com](http://turnitin.com), create an account if you do not yet have one (see below), select "enroll in a class," enter our Class ID (23390864) and Enrollment Password (alwayscite), and submit your paper as a Microsoft .doc or .docx file.

2. Submit your TurnItIn username via Canvas by 11:59 pm on Mar 30. Without this information we will not be able to identify your paper on TurnItIn.

**Setting up an account on Turnitin.** To submit your paper on Turnitin, you will need to create a unique user profile, consisting of a username (e-mail address) and password. Please note that information submitted to Turnitin is stored in the United States.

If you have concerns about privacy, it is recommended (but not required) that you remove identifying information, such as your name and student number, from the text of any assignment submitted to Turnitin. In addition, please follow these instructions:

1. Create an anonymous email address using one of the available free services.

2. Go to [turnitin.com](http://turnitin.com).

3. At the top right, go to Create Account and select Student.

4. Enter the Class ID (23390864) and Enrollment Key (alwayscite).

5. Create an alias or pseudonym. Please remember to also submit that alias/pseudonym via Canvas.

6. Please delete any identifying information from the original document prior to uploading it. This includes your name and student number in the document, as well as any metadata or hidden data that might be stored in the document itself. To remove metadata from your Microsoft Word document:

• Windows: You can remove the hidden data by using Microsoft Word's Document Inspector.

• Mac: You can remove the hidden data by clicking on Word > Preferences > Security, then selecting Remove personal information from this file on save.

### 5. Online Office-Hours Participation (1%):

During the course there will be many opportunities for you to interact with other students, and with myself and Stella. One such opportunity (for course credit) is through online video-based office hours, hosted by me or Stella via **Bb Collaborate**.

rate (see course menu in Canvas).

You will be required to attend one of our scheduled online office hours using Bb Collaborate. These office hours will involve me or Stella, yourself, and other students. Note that you are welcome to attend these scheduled office hours at any time. You must attend one scheduled office hour to receive your 1% for this component of the course. In addition, you are expected to bring at least one course-related question with you to the required office hour you attend. These questions can be about course content, or anything Psychology-related (e.g., questions about careers in Psychology).

Participation will be graded as follows: 1% for attendance with one question; 0.5% for attendance only (no question posed); 0% for non-attendance.

### 6. Online Exam Study-Group Participation (2%):

Another opportunity to interact with other student in the course (for course credit) is through online student-led video-based study groups via **Bb Collaborate** (see course menu in Canvas).

Student-led study-groups for each exam in the course will use **Canvas Bb Collaborate** (see course menu in Canvas) and you must attend at least two of them (though you are welcome to attend more) during the term for not less than 45 minutes (each session will last for 60 minutes) in order to get this part of your grade. There will be multiple opportunities to attend these study groups during the week prior to each midterm exam.

## COURSE MATERIALS

**Required:** OpenStax College. Psychology. OpenStax CNX. Oct 31, 2018. [cnx.org/contents/4abf04bf-93a0-45c3-9cbc-2cef-d46e68cc@9.30](https://cnx.org/contents/4abf04bf-93a0-45c3-9cbc-2cef-d46e68cc@9.30). This text was selected for this course because it is of high quality, it is free and open to use, and is at an appropriate reading level for an introductory psychology course. This text will be supplemented by many in-course videos and additional external resources that are designed to facilitate your understanding of the course materials. Please note that it is important that you either use the text that is embedded in Canvas, or use version 9.30 of the OpenStax text (see link above).

## WITHDRAWAL DATES

If you wish to withdraw from this course without any record of the course on your transcript, you must do so on or before **Jan 17**. If you wish to withdraw with a "W" on your transcript, you must do so on or before **Feb 14**.

## GRADING AND ATTENDANCE

**Grading.** In order to reduce grade inflation and maintain equi-

ty across course sections, all psychology courses are required to comply with departmental norms for grade distributions. **According to departmental norms, the mean grade in a 100-level distance education class is 69 for a strong class, 67 for an average class, and 65 for a weak class (with a standard deviation of 13). Scaling may be used in order to comply with these norms; grades may be scaled up or down as necessary by myself or the department. Grades are not official until they appear on your transcript.** You will receive both a percent and a letter grade for this course. At UBC, your course percentage is converted to a letter grade according to the following key:

A+	90-100%	A	85-89%
A-	80-84%	B+	76-79%
B	72-75%	B-	68-71%
C+	64-67%	C	60-63%
C-	55-59%	D	50-54%
F	0-49%		

Because you are earning a degree at a highly reputable post-secondary institution, the criteria for success are high. The Faculty of Arts offers the following guidelines that broadly characterize the kind of work that is generally associated with the particular grade ranges. These characteristics help put the Psychology Department grading policies into perspective. Please note that adequate performance is in the C range.

**A Range:** Exceptional Performance. Strong evidence of original thinking; good organization in written work; capacity to analyze (i.e., break ideas down) and to synthesize (i.e., bring different ideas together in a coherent way); superior grasp of subject matter with sound critical evaluations; evidence of extensive knowledge base.

**B Range:** Competent Performance. Evidence of grasp of subject matter; some evidence of critical capacity and analytic ability; reasonable understanding of relevant issues; evidence of familiarity with the literature.

**C-D Range:** Adequate Performance. Understanding of the subject matter; ability to develop solutions to simple problems in the material; acceptable but uninspired work; not seriously faulty but lacking style and vigor.

**F Range:** Inadequate Performance. Little or no evidence of understanding of the subject matter; weakness in critical and analytical skills; limited or irrelevant use of the literature.

**Attendance.** If the final exam is missed, you must apply through the Registrars office to write a make-up exam--they will probably require medical or other documentation. Please refer to the UBC Calendar for details of 'academic concession.'

During your time in this course, if you encounter medical, emotional, or other personal problems that affect your attendance or academic performance, please notify me, as well as your Academic Advisor. Please refer to the UBC Calendar for a discussion of academic concession.

The University accommodates students with disabilities who

have registered with the Centre for Accessibility (see below). The University also accommodates students whose religious obligations conflict with attendance or scheduled exams. Please let me know in advance, preferably in the first few weeks of class, if you will require any accommodation on these grounds. Other absences (e.g., varsity athletics, family obligations, or similar) are not part of University policy and you should not assume they will be accommodated.

**Centre for Accessibility.** UBC is committed to equal opportunity in education for all students including those with documented physical or learning disabilities. If you believe you fall in this category, please visit the website for the Centre for Accessibility ([students.ubc.ca/about-student-services/centre-for-accessibility](https://students.ubc.ca/about-student-services/centre-for-accessibility)) to take the necessary steps to ensure that you have every opportunity that you deserve to excel in your studies.

**Early Alert Program.** I participate in the Early Alert program, which helps me support students who are facing difficulties that are interfering with their education, their wellness or both. For answers to frequently asked questions regarding the early alert program, please visit [facultystaff.students.ubc.ca/systems-tools/early-alert/information-students](https://facultystaff.students.ubc.ca/systems-tools/early-alert/information-students).

**Credit/D/Fail Grading.** This course is eligible for Credit/D/Fail grading. The last day to change between Credit/D/Fail and percentage grading is **Jan 17**.

## UNIVERSITY POLICIES

UBC provides resources to support student learning and to maintain healthy lifestyles but recognizes that sometimes crises arise and so there are additional resources to access including those for survivors of sexual violence. UBC values respect for the person and ideas of all members of the academic community. Harassment and discrimination are not tolerated nor is suppression of academic freedom. UBC provides appropriate accommodation for students with disabilities and for religious observances. UBC values academic honesty and students are expected to acknowledge the ideas generated by others and to uphold the highest academic standards in all of their actions.

## OTHER COURSE POLICIES

**Online Conduct.** Our class is a place where you should feel safe and respected. It should also be a place that is conducive to learning and intellectual inquiry. Any behaviour on your part that compromises that environment will not be tolerated and you will be removed from this class.

## POINTS TO REMEMBER

- There are 13 weeks and 8 chapters will be covered during the course. Plan your reading and studying accordingly.

- Productive discussion and debate on the Canvas discussion forums is encouraged.

## ACADEMIC MISCONDUCT

Cheating, plagiarism, and other forms of academic misconduct are very serious concerns of the University, and the Department of Psychology has taken steps to alleviate them.

In all cases of suspected academic misconduct, the parties involved will be pursued to the fullest extent dictated by the guidelines of the University. Strong evidence of cheating or plagiarism may result in a zero credit for the work in question. According to the University Act (section 61), the President of UBC has the right to impose harsher penalties including (but not limited to) a failing grade for the course, suspension from the University, cancellation of scholarships, or a notation added to the student's transcript.

All graded work in this course, unless otherwise specified, is to be original work done independently by individuals. If you have any questions as to whether what you are doing is even a borderline case of academic misconduct, please consult with me. For details on pertinent University policies and procedures, please see Chapter 5 in the UBC Calendar ([students.ubc.ca/calendar](https://students.ubc.ca/calendar)) and read the University's Policy 69 (available at [universitycounsel.ubc.ca/policies/policy69.html](https://universitycounsel.ubc.ca/policies/policy69.html)).

## LEARNING & WELLBEING RESOURCES

Wellness resources are available on the Canvas page for the course (click the header image to be taken to a list of wellness resources), and they are also available here: [students.ubc.ca/health](https://students.ubc.ca/health).

If you or someone you know is in crisis: [students.ubc.ca/health/crisis-support](https://students.ubc.ca/health/crisis-support).

Learning resources are available on this UBC page: <https://students.ubc.ca/enrolment/academic-learning-resources>.

*Last Modified: January 5, 2020*

# COURSE SCHEDULE

Date	Topic(s)	Assigned Readings (available on Canvas)	Important Deadlines and Due Dates
<b>Week 1 (Jan 6-12)</b>	What is Psychology? (Psychology's History: Functionalism vs. Structuralism, Behaviorism, Psychophysics, Modern Approaches; Types of Psychologists)	Syllabus; OpenStax Psychology: Chapter 1 Introduction; Chapter 1, Sections 1.1 to 1.4.	
<b>Week 2 (Jan 13-19)</b>	Research Methods Pt. 1 (Nature of Scientific Inquiry, Research Methods of Psychology and Statistics)	OpenStax Psychology: Chapter 2 Introduction; Chapter 2, Sections 2.1, 2.2, 2.4.	<ul style="list-style-type: none"> <li>Jan 17: Add/drop deadline (without a 'W' on transcript)</li> </ul>
<b>Week 3 (Jan 20-26)</b>	Research Methods Pt. 2 (Nature of Scientific Inquiry, Research Methods of Psychology and Statistics)	OpenStax Psychology: Chapter 2, Sections 2.3.	<ul style="list-style-type: none"> <li>Jan 26: Weeks 1-3 Quizzes and Readings Reviews due</li> </ul>
<b>Week 4 (Jan 27-Feb 2)</b>	Motivation (Basic Concepts, Hunger & Eating, and Sexuality)	OpenStax Psychology: Chapter 10 Introduction; Chapter 10, Sections 10.1 to 10.3	<ul style="list-style-type: none"> <li>Feb 2: Week 4 Quiz and Readings Review due</li> </ul>
<b>Week 5 (Feb 3-9)</b>	Emotion (Physiology and Expression of Emotion, Theories of Emotion)	OpenStax Psychology: Chapter 10, Section 10.4	<ul style="list-style-type: none"> <li>Feb 9: Week 5 Quiz and Readings Review due</li> </ul>
<b>Week 6 (Feb 10-16)</b>	Developmental Psychology (Cross-Sectional vs. Longitudinal Designs, Nature vs. Nurture Debate, Influential Theories, Infancy, Childhood, Adolescence and Adulthood)	OpenStax Psychology: Chapter 9 Introduction; Chapter 9, Sections 9.1 to 9.4	<ul style="list-style-type: none"> <li>Feb 16: Week 6 Quiz and Readings Review due</li> </ul>
<b>Feb 17-21</b>	<b>Family Day (Feb 17) and Midterm Break (Feb 18-21)</b>		
<b>Week 7 (Feb 17-Mar 1)</b>	Psychological Testing and Intelligence	OpenStax Psychology: Chapter 7, Sections 7.4 to 7.6	<ul style="list-style-type: none"> <li>Mar 1: Week 7 Quiz and Readings Review due</li> <li>Feb 24: Last day to attend a student-led discussion group related to Midterm 1.</li> </ul>
<b>Feb 25-26</b>	<b>Midterm Exam 1 (online via Proctorio; from 10 am Pacific time on Feb 25 to 10 am on Feb 26).</b> Midterm Exam 1 will cover all assigned readings and lectures from Weeks 1-5.		
<b>Week 8 (Mar 2-8)</b>	Personality Psychology (Psychodynamic Perspective, Trait Perspective, and Humanistic Perspective)	OpenStax Psychology: Chapter 11 Introduction; Chapter 11, Sections 11.1 to 11.9	<ul style="list-style-type: none"> <li>Mar 8: Week 8 Quiz and Readings Review due</li> </ul>
<b>Week 9 (Mar 9-15)</b>	Social Psychology (Social-Cognitive Perspective, Attitudes and Behavior, Group Influences, Prejudice and Scapegoating, Altruism)	OpenStax Psychology: Chapter 12 Introduction; Chapter 12, Sections 12.1 to 12.7	<ul style="list-style-type: none"> <li>Mar 15: Week 9 Quiz and Readings Review due</li> </ul>
<b>Week 10 (Mar 16-22)</b>	Stress as a Concept, Stress & Health, and Adjustment	OpenStax Psychology: Chapter 14 Introduction; Chapter 14, Sections 14.1 to 14.5	<ul style="list-style-type: none"> <li>Mar 22: Week 10 Quiz and Readings Review due</li> <li>Mar 23: Last day to attend a student-led discussion group related to Midterm 2.</li> <li>Mar 23: Last day to attend a student-led group discussion related to your chosen short-essay topic</li> </ul>
<b>Mar 24-25</b>	<b>Midterm Exam 2 (online via Proctorio; from 10 am Pacific time on Mar 24 to 10 am on Mar 25).</b> Midterm Exam 2 will cover all assigned readings and lectures from Weeks 6-9.		
<b>Week 11 (Mar 23-29)</b>	Approaches to Atypicality	OpenStax Psychology: Chapter 15 Introduction; Chapter 15, Sections 15.1 to 15.3	<ul style="list-style-type: none"> <li>Mar 29: Week 11 Quiz and Readings Review due</li> </ul>
<b>Week 12 (Mar 30-Apr 5)</b>	Major Categories of Psychological Disorders	OpenStax Psychology: Chapter 15, Sections 15.4 to 15.11	<ul style="list-style-type: none"> <li>Mar 30: Short Essay due. Must be submitted both through Canvas and Turnitin.com</li> <li>Apr 5: Week 12 Quiz and Readings Review due</li> </ul>
<b>Week 13 (Mar 30-Apr 12)</b> <b>**week 13 materials open Mar 30; due on Apr 12</b>	Treatment of Psychological Disorders	OpenStax Psychology: Chapter 16 Introduction; Chapter 16, Section 16.1 to 16.5	<ul style="list-style-type: none"> <li>Apr 12: Week 13 Quiz and Readings Review due</li> </ul>
<b>Apr 14-29 (Final Exam Period)</b>	<p><b>Final Exam (online via Proctorio; Pacific time--24-hour window beginning at the date and time to be determined by UBC enrolment services). Please check the <a href="#">exam schedule</a> (published by enrolment services around the beginning of March) for the date and time of your exam.</b></p> <p>Details of what topics the final exam will cover, and how many questions from each topic will be included on the final exam, will be posted on Canvas.</p> <p><b>The last day to attend a student-led discussion group related to the Final Exam will be 1 day prior to the scheduled date of the final exam.</b></p>		